

BUITENPANEEL  
 HANKWEG 73(STREET) 2641WV (POSTAL) ZUID-HOLLAND(PROVINCE) THE NETHERLANDS (COUNTRY)

Sample Description : COMPOSITE WOOD WALL PANEL

As above test item and its relevant information regarding to the submission are provided and confirmed by the applicant. SGS is not liable to either the test item or its relevant information, in terms of the accuracy, suitability, reliability or/and integrity accordingly.

\*\*\*\*\*

SGS Ref No. : SDFTS25000381R01\_EN  
 Sample Receiving Date : Jan 07, 2025  
 Test Performing Date : Jan 15, 2025 to Feb 17, 2025  
 Test Performed : Selected test(s) as requested by applicant

**Test Result Summary**

No.	Test(s) Requested	Result(s)	Comments
1	EN 13501-1:2018 Fire classification of construction products and building elements—Part 1: Classification using data from reaction to fire tests.	See attached sheet	/
For further details, please refer to the following page(s)			

Signed for and on behalf of  
 SGS-CSTC Standards Technical Services Co., Ltd. Shunde Branch

Kitty Kang  
 Authorized Signatory

Scan to see the report



SDHL250100087601HI  
 Verification:  
 check.sgs.com



Unless otherwise agreed in writing, this document is issued by the Company subject to its General Conditions of Service printed overleaf, available on request or accessible at <https://www.sgs.com/en/Terms-and-Conditions>. Attention is drawn to the limitation of liability, indemnification and jurisdiction issues defined therein. Any holder of this document is advised that information contained hereon reflects the Company's findings at the time of its intervention only and within the limits of Client's instructions, if any. The Company's sole responsibility is to its Client and this document does not exonerate parties to a transaction from exercising all their rights and obligations under the transaction documents. This document cannot be reproduced except in full, without prior written approval of the Company. Any unauthorized alteration, forgery or falsification of the content or appearance of this document is unlawful and offenders may be prosecuted to the fullest extent of the law. Unless otherwise stated the results shown in this test report refer only to the sample(s) tested and such sample(s) are retained for 30 days only.  
**Attention: To check the authenticity of testing /inspection report & certificate, please contact us at telephone: (86-755) 8307 1443, or email: CN.Doccheck@sgs.com**  
 1-2/F., Building 1, European Industrial Park, No.1, Shunhe South Road, Wusha, Daliang, Shunde District, Foshan, Guangdong, China 528300 t (86-757)22805888 www.sgs.com.cn  
 中国·广东·佛山市顺德区大良街道办事处五沙社区居民委员会和南路1号欧洲工业园一号厂房首层、二层 邮编: 528300 t (86-757)22805888 sgs.china@sgs.com

**I. Test conducted**

This test is conducted as per EN 13501-1:2018 Fire classification of construction products and building elements — Part 1: Classification using data from reaction to fire tests. And the test methods as following:

1. EN 13823:2020+A1:2022 Reaction to fire tests for building products - Building products excluding floorings exposed to the thermal attack by a single burning item.
2. EN ISO 11925-2:2020 Reaction to fire tests — Ignitability of products subjected to direct impingement of flame — Part 2: Single-flame source test.

**II. Details of classified product**

Sample Description	Board
Color	See photos
Thickness	26mm
Area density	14.8kg/m <sup>2</sup>

**Mounting and fixing:**

Specimen was installed on the substrate by screw. There was no joint between specimens. Specimen had a ventilated cavity of 40mm away from the backing board. The substrate is provided by the by the customer.

**III. Test results**

Test methods	Parameter	Number of tests	Results
EN 13823	FIGRA <sub>0.2MJ</sub> (W/s)	3	55.5
	FIGRA <sub>0.4MJ</sub> (W/s)		55.5
	Whether lateral flame spread (LFS) to the edge of specimen (Yes/No)		No
	THR <sub>600s</sub> (MJ)		5.7
	SMOGRA (m <sup>2</sup> /s <sup>2</sup> )		177.5
	TSP <sub>600s</sub> (m <sup>2</sup> )		1300.1
	Flaming particles or droplets (Yes/No)		No
EN ISO 11925-2 Exposure = 30 s	F <sub>s</sub> ≤ 150mm within 60 s (Yes/No)	12	Yes
	Ignition of the filter paper (Yes/No)		No

**Note:**

FIGRA<sub>0.2MJ</sub> - Fire growth rate index at THR threshold of 0,2 MJ [W/s]

FIGRA<sub>0.4MJ</sub> - Fire growth rate index at THR threshold of 0,4 MJ [W/s]

THR<sub>600s</sub> -Total heat release within 600 s [MJ]

SMOGRA - Smoke growth rate [m<sup>2</sup>/s<sup>2</sup>]

TSP<sub>600s</sub>- Total smoke production within 600 s [m<sup>2</sup>]



Unless otherwise agreed in writing, this document is issued by the Company subject to its General Conditions of Service printed overleaf, available on request or accessible at <https://www.sgs.com/en/Terms-and-Conditions>. Attention is drawn to the limitation of liability, indemnification and jurisdiction issues defined therein. Any holder of this document is advised that information contained hereon reflects the Company's findings at the time of its intervention only and within the limits of Client's instructions, if any. The Company's sole responsibility is to its Client and this document does not exonerate parties to a transaction from exercising all their rights and obligations under the transaction documents. This document cannot be reproduced except in full, without prior written approval of the Company. Any unauthorized alteration, forgery or falsification of the content or appearance of this document is unlawful and offenders may be prosecuted to the fullest extent of the law. Unless otherwise stated the results shown in this test report refer only to the sample(s) tested and such sample(s) are retained for 30 days only.

Attention: To check the authenticity of testing /inspection report & certificate, please contact us at telephone: (86-755) 8307 1443, or email: [CN.Doccheck@sgs.com](mailto:CN.Doccheck@sgs.com)  
 1-2/F., Building 1, European Industrial Park, No.1, Shunhe South Road, Wusha, Daliang, Shunde District, Foshan, Guangdong, China 528300 t (86-757)22805888 www.sgs.com.cn  
 中国·广东·佛山市顺德区大良街道办事处五沙社区居民委员会顺和南路1号欧洲工业园一号厂房首层、二层 邮编: 528300 t (86-757)22805888 sgs.china@sgs.com

**IV. Classification and field of application**

**a) Reference of classification**

This classification has been carried out in accordance with **EN 13501-1:2018**.

**b) Classification**

The product, COMPOSITE WOOD WALL PANEL (as described by the sponsor), in relation to its reaction to fire behaviour is classified:

Fire behaviour		Smoke production			Flaming droplets	
<b>B</b>	—	<b>s</b>	<b>3</b>	,	<b>d</b>	<b>0</b>

**Reaction to fire classification: B—s3, d0**

**Remark:** The classes with their corresponding fire performance are given in annex A.

**c) Field of application**

This classification is valid for the following product parameters:

--- Characteristics as described in section II of this test reports.

This classification is valid for the following end use applications:

- With substrates
- With mechanically fixing
- No joint

**Limitations**

This classification document does not represent type approval or certification of the product.

**Warning:**

The test laboratory has, therefore, played no part in sampling the product for the test, although it holds appropriate references, supplied by the manufacturer, to provide for traceability of the samples tested.

**Statement:**

This declaration of conformity is only based on the result of this laboratory activity, the impact of the uncertainty of the results was not included.



Unless otherwise agreed in writing, this document is issued by the Company subject to its General Conditions of Service printed overleaf, available on request or accessible at <https://www.sgs.com/en/Terms-and-Conditions>. Attention is drawn to the limitation of liability, indemnification and jurisdiction issues defined therein. Any holder of this document is advised that information contained hereon reflects the Company's findings at the time of its intervention only and within the limits of Client's instructions, if any. The Company's sole responsibility is to its Client and this document does not exonerate parties to a transaction from exercising all their rights and obligations under the transaction documents. This document cannot be reproduced except in full, without prior written approval of the Company. Any unauthorized alteration, forgery or falsification of the content or appearance of this document is unlawful and offenders may be prosecuted to the fullest extent of the law. Unless otherwise stated the results shown in this test report refer only to the sample(s) tested and such sample(s) are retained for 30 days only.  
**Attention: To check the authenticity of testing /inspection report & certificate, please contact us at telephone: (86-755) 8307 1443, or email: CN.Doccheck@sgs.com**  
 1-2/F., Building 1, European Industrial Park, No.1, Shunhe South Road, Wusha, Daliang, Shunde District, Foshan, Guangdong, China 528300 t (86-757)22805888 www.sgs.com.cn  
 中国·广东·佛山市顺德区大良街道办事处五沙社区居民委员会顺和南路1号欧洲工业园一号厂房首层、二层 邮编: 528300 t (86-757)22805888 sgs.china@sgs.com

**Annex A**

Classes of reaction to fire performance for construction products excluding floorings and linear pipe thermal insulation products

Class	Test method(s)	Classification criteria	Additional classification
A1	EN ISO 1182 <sup>a</sup> and	$\Delta T \leq 30^\circ\text{C}$ , and $\Delta m \leq 50\%$ , and $t_f = 0$ (i.e. no sustained flaming)	-
	EN ISO 1716	$PCS \leq 2.0\text{MJ/kg}$ <sup>a</sup> and $PCS \leq 2.0\text{MJ/kg}$ <sup>b,c</sup> and $PCS \leq 1.4\text{MJ/m}^2$ <sup>d</sup> and $PCS \leq 2.0\text{MJ/kg}$ <sup>e</sup>	-
A2	EN ISO 1182 <sup>a</sup> or	and $\Delta T \leq 50^\circ\text{C}$ , and $\Delta m \leq 50\%$ , and $t_f \leq 20\text{ s}$	-
	EN ISO 1716		-
	EN 13823	$FIGRA_{0,2\text{MJ}} \leq 120\text{W/s}$ and $LFS < \text{edge of specimen}$ and $THR_{600\text{s}} \leq 7.5\text{MJ}$	Smoke production <sup>f</sup> and Flaming droplets/particles <sup>g</sup>
B	EN 13823 and	$FIGRA_{0,2\text{MJ}} \leq 120\text{W/s}$ and $LFS < \text{edge of specimen}$ and $THR_{600\text{s}} \leq 7.5\text{MJ}$	Smoke production <sup>f</sup> and Flaming droplets/particles <sup>g</sup>
	EN ISO 11925-2 <sup>i</sup> Exposure = 30s	$F_s \leq 150\text{mm}$ within 60s	
C	EN 13823 and	$FIGRA_{0,4\text{MJ}} \leq 250\text{W/s}$ and $LFS < \text{edge of specimen}$ and $THR_{600\text{s}} \leq 15\text{MJ}$	Smoke production <sup>f</sup> and Flaming droplets/particles <sup>g</sup>
	EN ISO 11925-2 <sup>i</sup> Exposure = 30s	$F_s \leq 150\text{mm}$ within 60 s	
D	EN 13823 and	$FIGRA_{0,4\text{MJ}} \leq 750\text{W/s}$	Smoke production <sup>f</sup> and Flaming droplets/particles <sup>g</sup>
	EN ISO 11925-2 <sup>i</sup> Exposure = 30s	$F_s \leq 150\text{mm}$ within 60 s	
E	EN ISO 11925-2 <sup>i</sup> Exposure = 15s	$F_s \leq 150\text{mm}$ within 20 s	flaming droplets/particles <sup>h</sup>
F	EN ISO 11925-2 <sup>i</sup> Exposure = 15 s	$F_s > 150\text{mm}$ within 20 s	



Unless otherwise agreed in writing, this document is issued by the Company subject to its General Conditions of Service printed overleaf, available on request or accessible at <https://www.sgs.com/en/Terms-and-Conditions>. Attention is drawn to the limitation of liability, indemnification and jurisdiction issues defined therein. Any holder of this document is advised that information contained hereon reflects the Company's findings at the time of its intervention only and within the limits of Client's instructions, if any. The Company's sole responsibility is to its Client and this document does not exonerate parties to a transaction from exercising all their rights and obligations under the transaction documents. This document cannot be reproduced except in full, without prior written approval of the Company. Any unauthorized alteration, forgery or falsification of the content or appearance of this document is unlawful and offenders may be prosecuted to the fullest extent of the law. Unless otherwise stated the results shown in this test report refer only to the sample(s) tested and such sample(s) are retained for 30 days only.

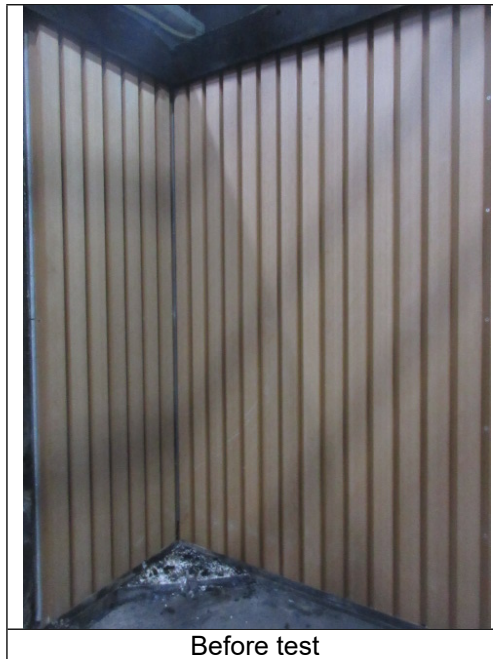
Attention: To check the authenticity of testing /inspection report & certificate, please contact us at telephone: (86-755) 8307 1443, or email: [CN.Doccheck@sgs.com](mailto:CN.Doccheck@sgs.com)

SGS-CSTC Technical Services Co., Ltd.  
Shunde Branch

1-2/F., Building 1, European Industrial Park, No.1, Shunhe South Road, Wusha, Daliang, Shunde District, Foshan, Guangdong, China 528300 t (86-757)22805888 www.sgs.com.cn  
中国·广东·佛山市顺德区大良街道办事处五沙社区居民委员会顺和南路1号欧洲工业园一号厂房首层、二层 邮编: 528300 t (86-757)22805888 sgs.china@sgs.com

- <sup>a</sup> For homogeneous products and substantial components of non-homogeneous products.
- <sup>b</sup> For any external non-substantial component of non-homogeneous products.
- <sup>c</sup> Alternatively, any external non-substantial component having a PCS  $\leq 2,0 \text{ MJ/m}^2$ , provided that the product satisfies the following criteria of EN 13823: FIGRA  $\leq 20 \text{ W/s}$ , and LFS < edge of specimen, and THR<sub>600s</sub>  $\leq 4,0 \text{ MJ}$ , and s1, and d0.
- <sup>d</sup> For any internal non-substantial component of non-homogeneous products.
- <sup>e</sup> For the product as a whole.
- <sup>f</sup> s1 = SMOGRA  $\leq 30\text{m}^2/\text{s}^2$  and TSP<sub>600s</sub>  $\leq 50\text{m}^2$ ; s2 = SMOGRA  $\leq 180\text{m}^2/\text{s}^2$  and TSP<sub>600s</sub>  $\leq 200\text{m}^2$ ; s3 = not s1 or s2
- <sup>g</sup> d0 = No flaming droplets/ particles in EN 13823 within 600 s;  
d1 = no flaming droplets/ particles persisting longer than 10 s in EN 13823 within 600 s;  
d2 = not d0 or d1.  
Ignition of the paper in EN ISO 11925-2 results in a d2 classification.
- <sup>h</sup> Pass = no ignition of the paper (no classification);  
Fail = ignition of the paper (d2 classification).
- <sup>i</sup> Under conditions of surface flame attack and, if appropriate to the end–use application of the product, edge flame attack.

**Photo Appendix:**



SGS authenticate the photo on original report only

\*\*\*End of Report\*\*\*



Unless otherwise agreed in writing, this document is issued by the Company subject to its General Conditions of Service printed overleaf, available on request or accessible at <https://www.sgs.com/en/Terms-and-Conditions>. Attention is drawn to the limitation of liability, indemnification and jurisdiction issues defined therein. Any holder of this document is advised that information contained hereon reflects the Company's findings at the time of its intervention only and within the limits of Client's instructions, if any. The Company's sole responsibility is to its Client and this document does not exonerate parties to a transaction from exercising all their rights and obligations under the transaction documents. This document cannot be reproduced except in full, without prior written approval of the Company. Any unauthorized alteration, forgery or falsification of the content or appearance of this document is unlawful and offenders may be prosecuted to the fullest extent of the law. Unless otherwise stated the results shown in this test report refer only to the sample(s) tested and such sample(s) are retained for 30 days only.  
**Attention: To check the authenticity of testing /inspection report & certificate, please contact us at telephone: (86-755) 8307 1443, or email: CN.Doccheck@sgs.com**  
 1-2/F., Building 1, European Industrial Park, No.1, Shunhe South Road, Wusha, Daliang, Shunde District, Foshan, Guangdong, China 528300 t (86-757)22805888 www.sgs.com.cn  
 中国·广东·佛山市顺德区大良街道办事处五沙社区居民委员会顺和南路1号欧洲工业园一号厂房首层、二层 邮编: 528300 t (86-757)22805888 sgs.china@sgs.com